

Product Information

Issue Date: March 10, 2007

Model: SLK-035A11

Note: The product and specification are subject to change without prior notice. Please contact your sales representative for the most current specifications.

Contents

1. General Description 3

2. Features 3

3. Photos of Driver and OSD 4

4. Port Definitions and Electrical Requirements 5

5. Mechanical Drawings and Specifications 7

6. Transport, Storage and Use Requirements 8

7. OSD Features 9

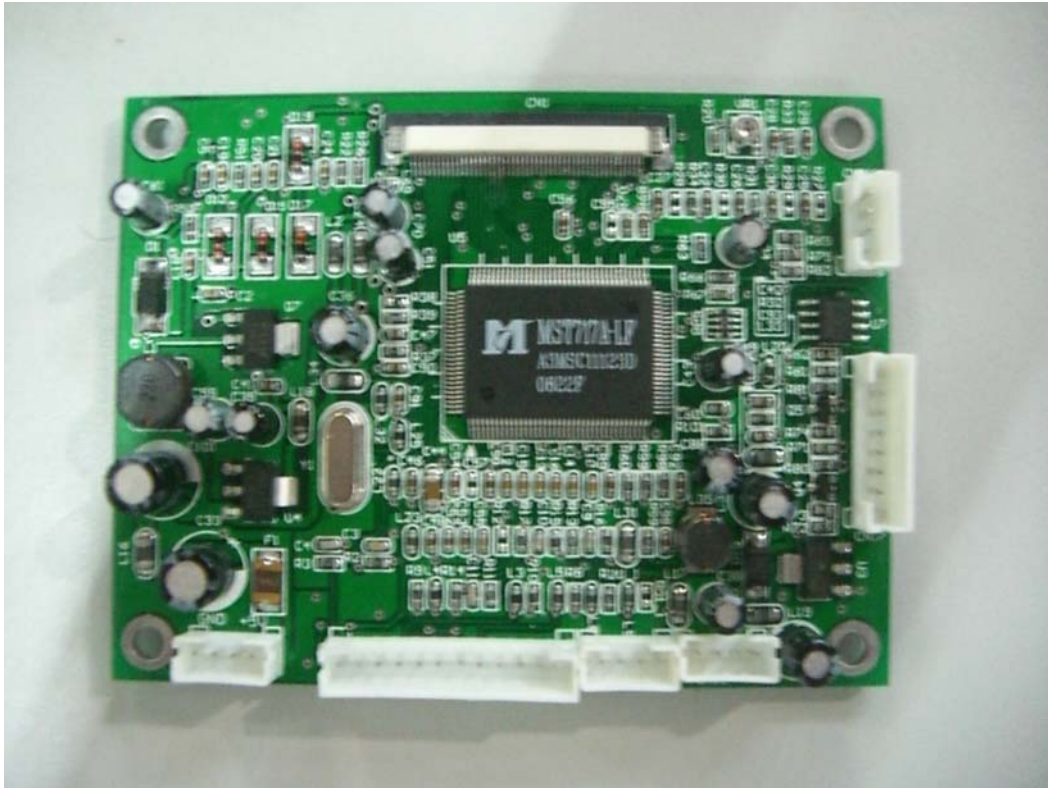
1. General Description

The SLK-035A11 AD Board is compatible with the Primeview PD035VX2 TFT-LCD. The board could signal an external 2-cvbs and vga signal. Its stable performance can be widely used in advertising machines, video doorbell, video telephony, surveillance equipment and other equipment.

2. Features

Input:	Analog RGB (0.7Vp-p), AV (CVBS)
Frequency	640 x 480, 800 x 600
Color	Max 32bit
H Synchronous signal	f H : 48.1Khz f H :37.9Khz f H :35.1Khz f H :31.5Khz
V Synchronous signal	f V : 75Hz f V : 72Hz f V : 60 Hz f V : 56 Hz
Keyboard operation	Ordinary keys, (Can choose Remote control button)
OSD Function	Brightness, Contrast, Clock, H-Position, V-Position, Color
Audio amplifier	No Audio amplifier
Power Source	5V (+/-0.3V)(DC)
Power:	normal mode, low-power mode
Power	3.0W (no load)
Size:	84mm(L)×64mm(W)×11.25mm(H)
Plug-and-play functions	support
Power Management	standby power <3 W

3. Photos of Driver and OSD



Driver Board photo



Keyboard photo

4. Port Definitions and Electrical Requirements

CN11 (Video Input) 4PIN/2.0

Pin	Definition	DESCRIPTION
1	AV1	AV 1 Input
2	GND	GND
3	AV2	AV 2 Input
4	GND	GND

CN19 (Audio amplifier) 6PIN/2.0 No Audio amplifier

Pin	Definition	DESCRIPTION
1	GND	GND
2	GND	GND
3	A	NC
4	B	NC

CN4 (VGA Input) 12PIN/2.0

Pin	Definition	DESCRIPTION
1	SCL	
2	SDA	
3	GND	
4	B+	BLUE
5	B-	
6	G+	GREEN
7	G-	
8	R+	RED
9	R-	
10	HS	Horizontal
11	VS	vertical
12	GND	

CN17 (Key Connector) 8PIN/2.0

Pin	Definition	DESCRIPTION
1	VCC +5V	5V
2	GND	GND
3	IR INT	IR
4	LED GREEN	
5	LED RED	
6	GND	
7	SAR0	Data signals
8	SAR1	Data signals

CN1 (TTL Connector Definition)

Pin	Definition	DESCRIPTION
1	DIO1	Horizontal Start Pulse Signal Input or Output 1
2	VSS2	Ground
3	VDD1	Power Supply
4	CLK	Horizontal Shift Clock
5	R/L	Left/Right Selection
6	R0	Red Data (LSB)
7	R1	Red Data
8	R2	Red Data
9	R3	Red Data
10	R4	Red Data
11	R5	Red Data (MSB)
12	VSS2	Ground
13	G0	Green Data (LSB)
14	G1	Green Data
15	G2	Green Data
16	G3	Green Data
17	G4	Green Data
18	G5	Green Data (MSB)
19	B0	Blue Data (LSB)
20	B1	Blue Data
21	B2	Blue Data
22	B3	Blue Data
23	B4	Blue Data
24	B5	Blue Data (MSB)
25	LD	Load output signal
26	REV	Data invert control
27	POL	Polarity selection
28	DIO2	Horizontal Start Pulse Signal Input or Output
29	VSS2	Ground
30	V3	Gamma Voltage 3
31	V5	Gamma Voltage 5
32	V7	Gamma Voltage 7
33	V8	Gamma Voltage 8
34	V10	Gamma Voltage 10
35	V12	Gamma Voltage 12
36	VSS2	Ground
37	VDD2	Voltage for analog circuit
38	VCOM	Common Voltage
39	OE	Output Enable
40	U/D	Up/Down Selection
41	CKV	Vertical Shift Clock
42	STVU	Vertical Shift Pulse Signal Input or Output
43	STVD	Vertical Shift Pulse Signal Input or Output
44	VGG	Gate On Voltage
45	VSS1	Ground
46	VCC	Voltage for logic circuit
47	VEE	Gate Off Voltage
48	VLED	Supply voltage for LED backlight
49	GLED2	Ground for LED backlight
50	GLED1	Ground for LED backlight

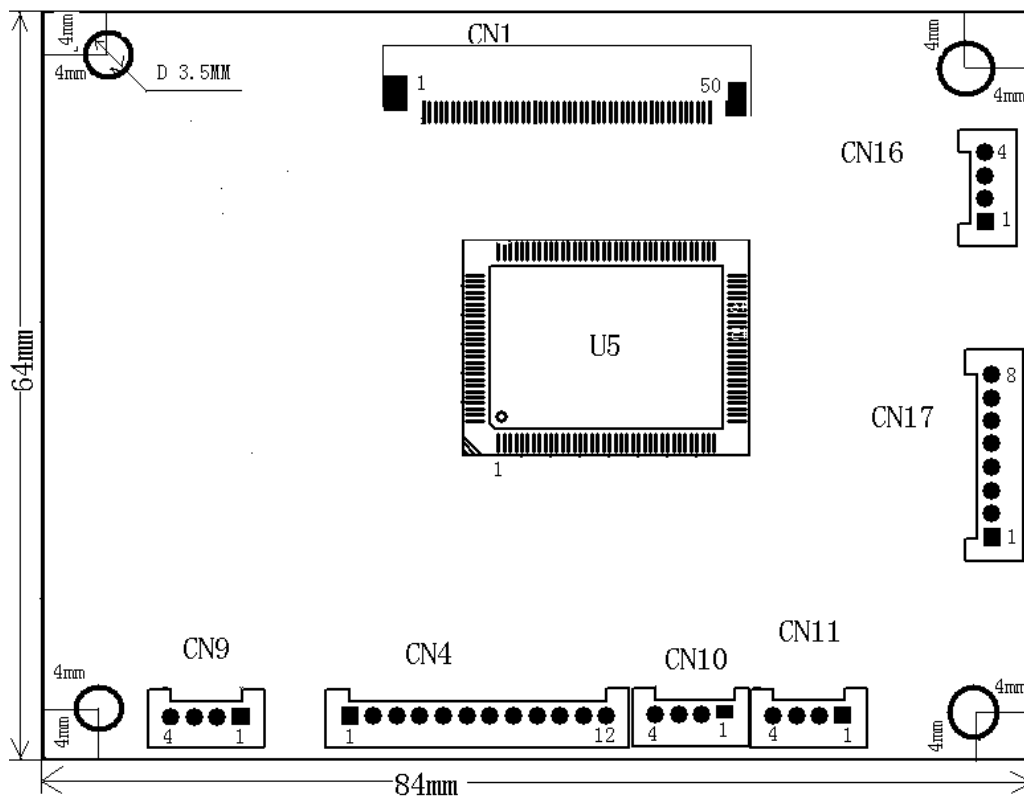
CN16 (Software Port) 4PIN/2.0

Pin	Definition	DESCRIPTION
1	+5V	Testing Power
2	GND	GND
3	TX	Data Out
4	RX	Data In

CN9 (Power Connector) 4PIN/2.0

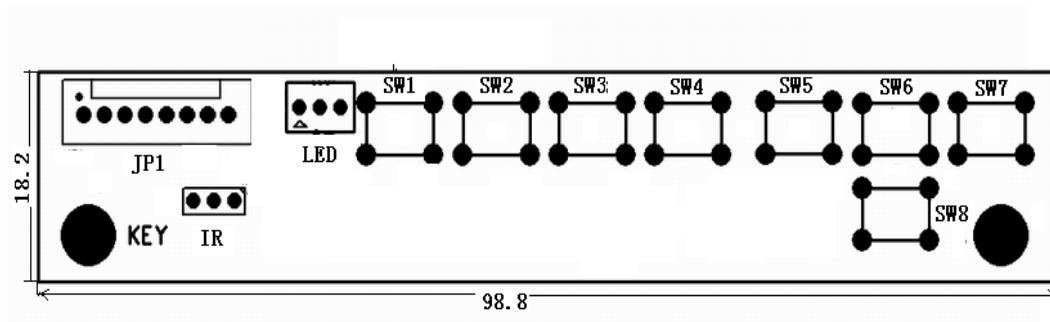
Pin	Definition	DESCRIPTION
1	+5V	Power Input
2	+5V	Power Input
3	GND	GND
4	GND	GND

5. Mechanical Drawings and Specifications



MECHANICAL DRAWING

- (1) PCB High =11.25 mm
- (2) PCB length = 84.0 mm
- (3) PCB width = 64.0 mm
- (4) Diameter of screw hole = 3.5mm



OSD KEYBOARD DRAWING

- SW1/SW2 : Power NO/OFF
- SW3 : AV_VGA Signal Switch
- SW4 :OSD menu
- SW5 :”+”
- SW6 : Go to the next function
- SW7 : ”—”
- SW8 : Go on a functional

6. Transport, Storage, and Use Requirements

- ◆ Do not subject to pressure or bending
- ◆ Store in antistatic packaging
- ◆ Relative Humidity: ≤ 80%
- ◆ Storage temperature: -10 ~ +70 °C
- ◆ Operating Temperature: 0 ~ +60 °C

7. OSD Features

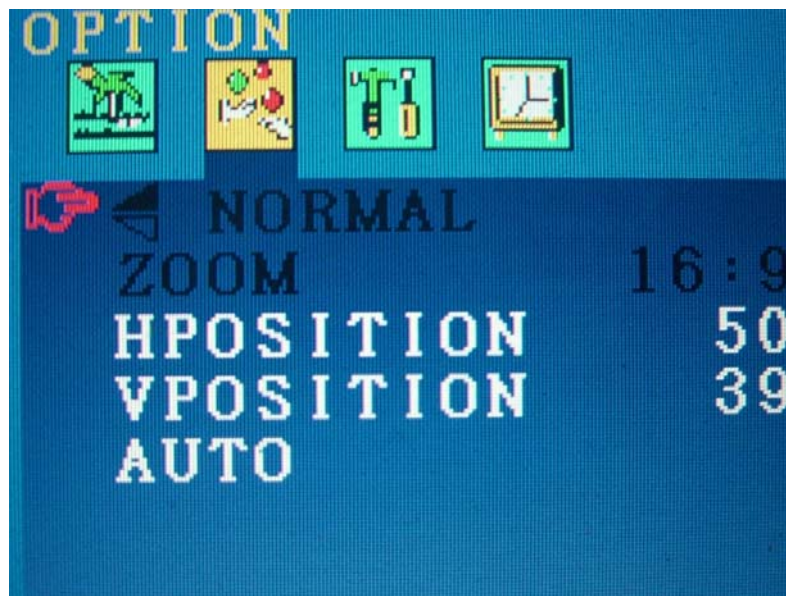
7.1. Picture

Brightness, Contrast, Color, Language Switch



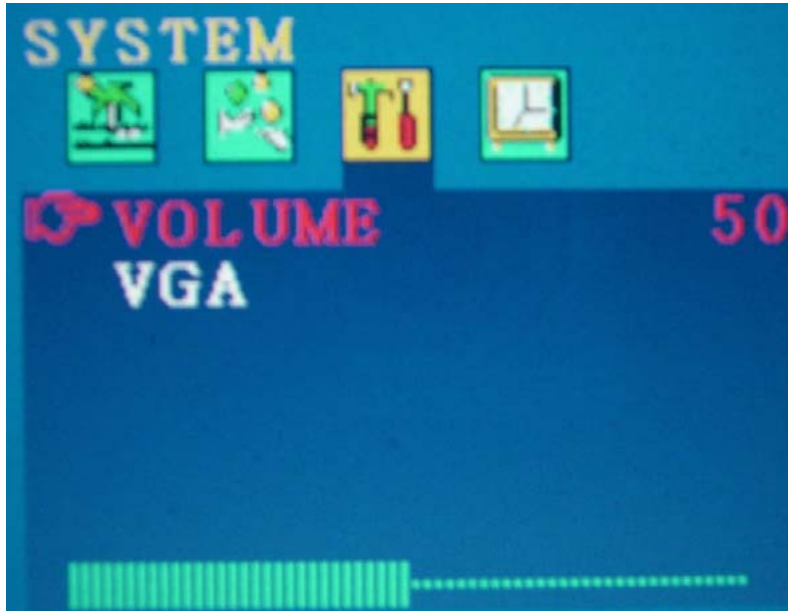
7.2. Functions

Screen rotation, scaling, VGA photos Horizontal position, vertical position, and automatically adjust



7.3. System

Signal switch



7.4. Time

Sleep shutdown, clock, shutdown time, the start-up time

